



DATA SHEET FOR FLP AVIATION LED LIGHT FITTING

FLP- WP LED AVIATION LAMP IIA , IIB , IIC

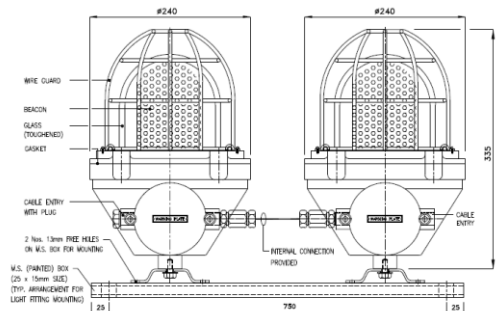
TECHNICAL DATA:

- PRODUCT : CAT NO : WG / 1238
- ENCLOSURE : FLAME PROOF (Ex -d) , Gas Group IIA , IIB , IIC
As per IS/IEC 60079-1 : 2014
- PROTECTION : WEATHER PROOF IP – 66 AS PER IS/IEC 60529:2001
(Reaffirmed 2014)
- AREA CLASSIFICATION : Ex db IIC T6 Gb (EX tb / tc IIIC T85 C Db/Dc
(ZONE 1 & 2 & Zone 21 & 22)
- TEMPERATURE CLASS : T 6
- MATERIAL : DIE CAST ALUMINIUM ALLOY
- FINISH : EPOXY POWDER COATED SHADE AS PER IS : 5
- EARTHING : 1 No INTERNAL & 2 No's EXTERNAL
- HARDWARE : STAINLESS STEEL
- GASKET : 'O' RING ENDLESS GASKET NEOPRENE / SILICON
- NAME PLATE : SS NAME PLATE CUM WARNING PLATE
- GLASS : HEAT RESISTANT CLEAR TYPE – A TOUGHENED
GLASS (DOME)
- HOLDER : ES HOLDER
- ENTRIES : 2 Nos M20 / ½ " NPT / EQUIVALENT
- VOLTAGE : 24V DC
- INPUT FREQUENCY : 50 Hz.
- SURFACE TEMPERATURE : MAX . 70°
- LED MAKE : CLUSTER TYPE ' SUDHIR ' OR EQUIVELANT



OPTIONS

SR.NO	PARTICULAR	OPTIONS
1.	MATERIAL OF CONSTRUCTION	STAINLESS STEEL
2.	VOLTAGE	230 V AC , 110 V DC/110 V AC
3.	COLOUR SHADE	631 , 632 , 355 , 7031 , 7032 etc..
4.	WIRE GUARD	MS WHITE EPOXY POWDER COATED / SS
5.	TYPE	SINGLE / DOUBLE
6.	COLOUR	RED , BLUE , GREEN , ORANGE ETC.



SELECTION CHART

SR.NO	PARTICULAR	OPTIONS	TYPE	WATTAGE
1.	SINGLE	LOW INTENSITY	A) FLASHING B) ROTATING C) STEADY	6
2.		MEDIUM INTENSITY	A) FLASHING B) ROTATING C) STEADY	15
3.	DOUBLE	LOW INTENSITY	D) FLASHING E) ROTATING F) STEADY	6
4.		MEDIUM INTENSITY	D) FLASHING E) ROTATING F) STEADY	15